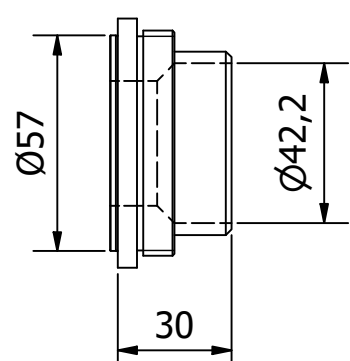
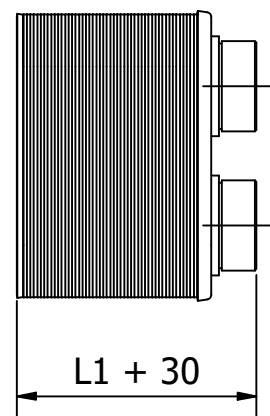
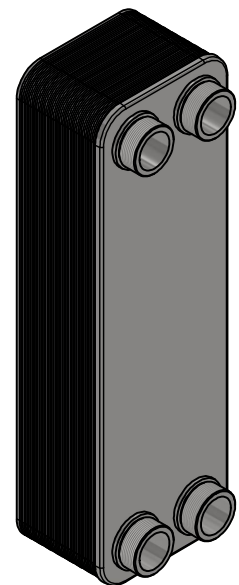
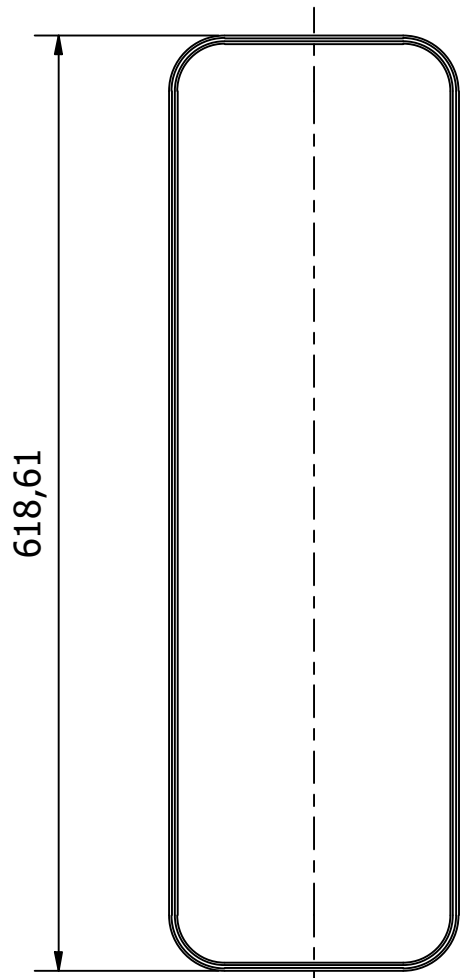
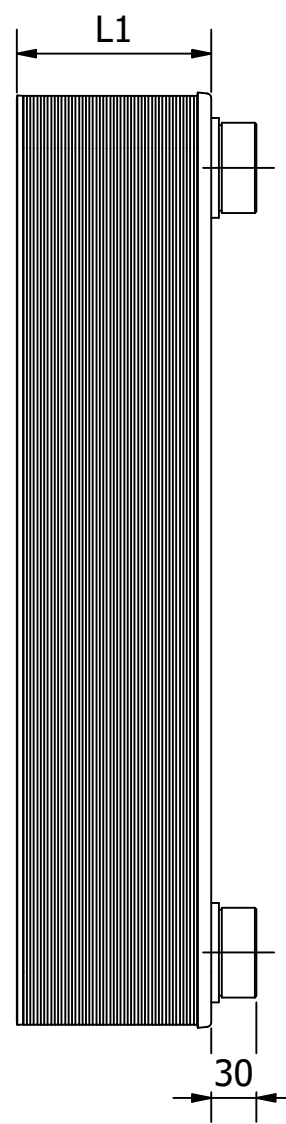
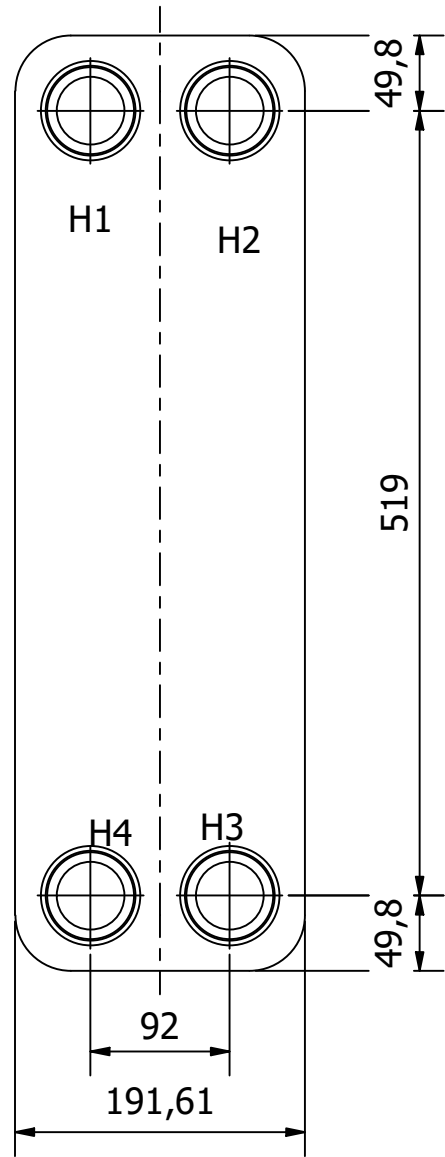


PIPE THREAD ISO7-R 2"




Ø42,2 PIPE BRAZING CONNECTION



FOR INSULATION CAPS:

CLOSED INSULATIONS: $L = L1 + 5mm$
 OPEN INSULATIONS: $L = L1 + 5mm + 25mm$
 (5mm tolerance, 25mm for feet bolt if mounted)

$L1 = (N \times 2,3) + 11mm$

Dimensions without tolerance:	Designed by dala	Date 22-12-2022	Rev. no. 00	Rev. by	Material	Weight 28,0 kg
ISO 2768-m	Revision Text				Description: SFB51 BRAZED DIMENSIONAL DRAWING CONNECTIONS 2" (Ø57mm)	
ISO projektion	 Nordager 25 DK-6000 Kolding				Scale 1 : 5	Sheet A3
					Drawing no. SFB51 DIM. DRAW	Sheet 1/1